

ERRATA

Volume 70, Number 1, May 3, 1976

In "Characterization of the Ca^{2+} -Regulatory Complex of Chick Embryonic Muscles: Polymorphism of Tropomyosin in Adult and Embryonic Fibers," by Raman K. Roy, James D. Potter, and Satyapriya Sarkar, pp. 28-36:

Page 34, legend to Fig. 6, lines 4 and 5, part d), should read: "d) mixed sample of rabbit TM (8 μg) and adult chicken breast TM (8 μg)."

Volume 70, Number 2, May 17, 1976

In "Isolation of the S-Peptide Formed on Digestion of Fructose 1,6-Bisphosphatase with Subtilisin and Its Non-Covalent Association with the Enzyme Protein," by Andrzej Dzugał, Douglas K. Chu, Hamza A. El-Dorry, B. L. Horecker, and S. Pontremoli, pp. 638-646, Fig. 1B as originally printed was unclear. The figure that follows is an improved print, reproduced here for the convenience of the readers.

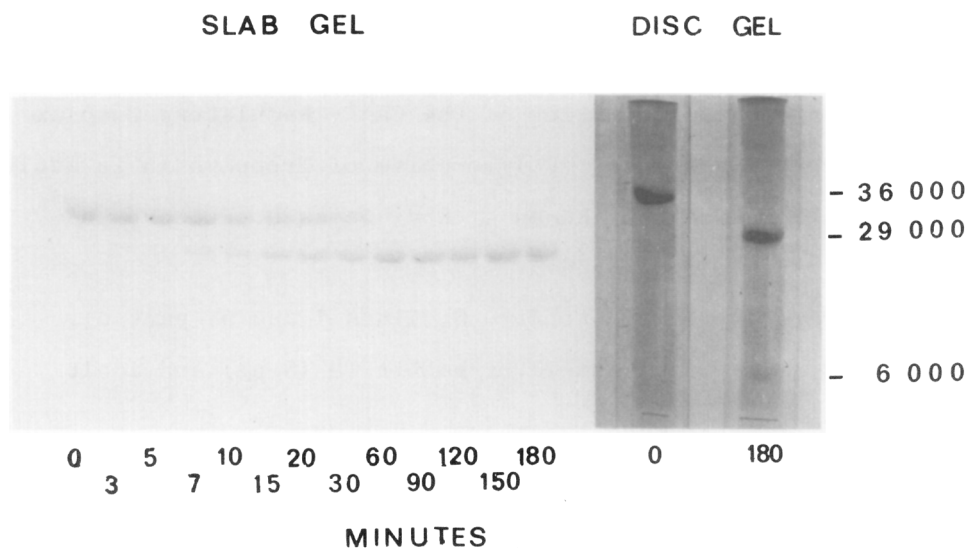


Fig. 1B Changes in subunit structure during digestion with subtilisin. Aliquots (20 μ g) were removed before addition of subtilisin at intervals during digestion as indicated. The reaction was stopped by addition of an equal volume of 45% HCOOH, and the samples lyophilized. Flat slab electrophoresis on polyacrylamide gels in Na dodecyl sulfate was carried out with the samples dissolved as described by Maizel (13). The initial sample contained only the 36,000 MW subunit. After 3 h this was almost completely replaced (>95%) by the lighter subunit, MW approximately 30,000. The S-peptide was not visible on the flat plates, but could be seen in disc gel electrophoresis (40 μ g aliquot).